

**QUALITY FIRST:**

What's the use of fast MFPs if they don't deliver on quality?

The e-STUDIO5015AC series has passed all tests in this area with flying colours.

**FACTS**  
RESULT **very good**  
1/2019

# The multicolour sprinter

**In late autumn, Toshiba presented two new series with a total of ten multifunction systems in the black-and-white and colour range equipped with the latest e-BRIDGE Next technology. FACTS has had a close look at the e-STUDIO3515AC colour system, which is running on behalf of the e-STUDIO5015AC series.**

Ensuring efficient workflows based on intelligent document processes is a central issue at all companies today, however big they are. But companies that want to be well prepared for this need more than just suitable software; they also need hardware systems that are able to digitise, store, and distribute documents, and even reproduce them like classic printers. With the e-STUDIO5015AC series, document specialist Toshiba has presented five new colour models over the past few months, which FACTS tested immediately after the sales launch. All systems are equipped with the latest e-BRIDGE Next technology, ensuring easy integration into IT infrastructures and workflows. Time and time again, the FACTS editor have praised the sophistication of the e-BRIDGE technology, which Toshiba has been developing consistently for years.

The range consists of the systems e-STUDIO2515AC, 3015AC, 3515AC, 4515AC, and 5015AC, which differ mainly in their printing speeds. While the 'smallest' system (e-STUDIO2515AC) produces up to 25 sheets per minute, the top system e-STUDIO5015AC prints a maximum of 50 sheets. As part of their detailed test, the editors chose the e-STUDIO3515AC with a paper output of 35 sheets per minute.

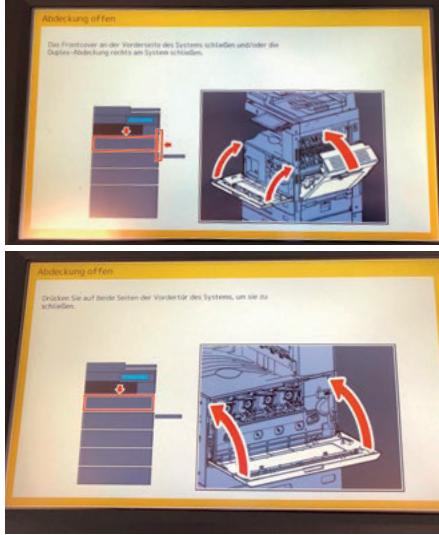
Like its predecessors, the new multifunction system comes in a stylish black design, distinguishing it from conventional MFPs. The 10.1-inch colour touch screen is a stand-out feature and enables the device to be controlled very easily and intuitively. But that's not all: users can also customise the control panel's configuration and place the most-used functions on the start page, for example. In addition, the touch panel serves as an interface for the open

system architecture, and the integrated web browser can easily control both Toshiba's own solutions and third-party software tools. Amongst other things, Toshiba itself offers a Print & Capture solution that enables users to access the system while on the go. The printer also effortlessly supports mobile printing via AirPrint, Mopria Print Service, and Google Cloud Print.

The e-STUDIO3515AC passed the FACTS standard test – measuring productivity and quality – with flying colours: the new MFP carried out all test tasks, such as printing very large PDF or PowerPoint files as well as Excel files that had to be printed on both sides three times, without any significant loss of speed. It absolutely delivered on the speed of 35 sheets per minute described in the brochures when printing and copying black and white and colour pages.



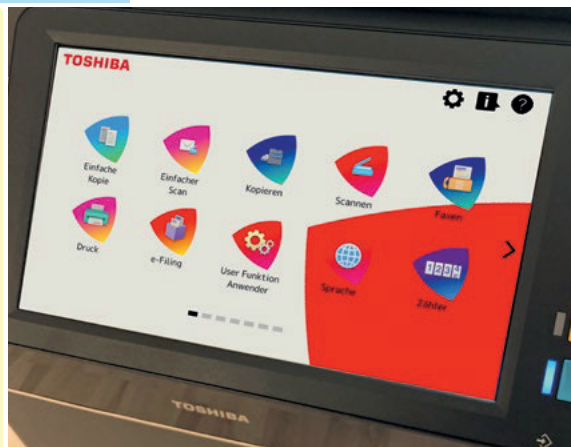
**CLEAN:**  
All consumables can be changed quickly, easily, and – most importantly – without producing toner dust.



**A HELPING HAND:**  
If there are any problems, the system provides assistance via the control panel and very quickly solves issues such as paper jams.



**FANTASTIC PERFORMANCE:**  
The built-in dual scan document feeder achieves a maximum speed of 240 images per minute at a resolution of 300 dpi.



**WRAPPED AROUND YOUR FINGER:**  
The systems can be operated intuitively via the 10.1-inch colour multitouch panel, and the user interface is customisable

The new Toshiba colour system also received the highest marks for the quality tests, having no issues with the required printouts such as photos and colour gradients as well as small fonts.

### NO PROBLEMS IN THE TEST

The quality of the template copies is more than good enough for office applications. However, it should be mentioned that the machine's print quality is slightly better than the copy quality due to the technology used. The reason behind the MFP's high print quality is the print resolution of 1,200 x 1,200 dpi (2 bit). The modular structure is also worth mentioning: the standard version of the system has a paper capacity of up to 2 x 550 sheets and a stacking capacity of 100 sheets. All models in the series can be upgraded up to 3,200 sheets upon request. It's also possible to further increase productivity in terms of digitisation by choosing the optional dual scanner, which is exceptionally fast – 240 images per minute. Also on offer are options such as Wi-Fi or Bluetooth connectivity, various finishers for paper processing, an OCR or MetaScan dongle, and much more.

When purchasing IT systems, one of the biggest concerns companies have is security. Thankfully, the e-BRIDGE Next technology's security concept offers a great deal of protection from unauthorised third-party access, even in its standard version. The basic protection is based on data encryption with Toshiba Secure HDD, IP and MAC filters, role-based access control, Private Print, and much more.

For users who need even more security, Toshiba also offers user authentication via ID Gate and a data-overwrite dongle. Multi-Station Print is also an integrated output management option for companies that have multiple e-BRIDGE systems (up to 50). The user authenticates themselves in the system and prints at a location that suits them. There's no need for an additional server.

Klaus Leifeld ■  
Translated to English by TGIS Marketing Division ■

### Conclusion

With the new colour MFP models in the e-STUDIO5015AC series, Toshiba is launching five new systems that have it all. Whether in terms of productivity, quality, or security, the FACTS test revealed only positive results. The FACTS editorial team praised the modular design of the series, the high level of functionality, and easy operation via the 10.1-inch colour touch screen.

#### ASSESSMENT

<b>Productivity:</b>	★★★★★★
<b>Print quality:</b>	★★★★★★
<b>Copy quality:</b>	★★★★★
<b>Functionality:</b>	★★★★★★
<b>Handling / Operation:</b>	★★★★★★
<b>Overall result:</b>	<b>very good</b>