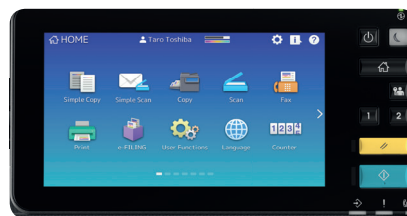
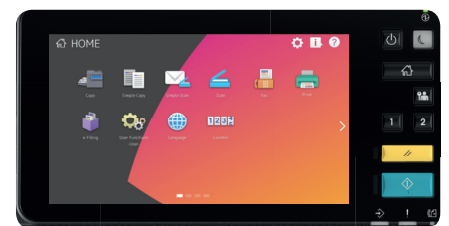


# They have arrived!

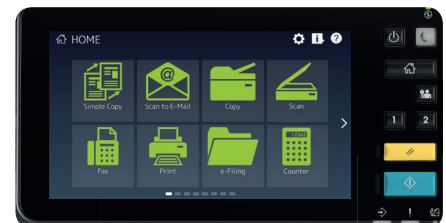
The printer and MFP specialist Toshiba Tec is presenting its professional dealers with a potpourri of product innovations these days, including the e-STUDIO2505AC in the new colour MFP series. We at FACTS got the opportunity to test its productivity and quality before it went on sale.



THE FACTS EDITORIAL STAFF WERE UNANIMOUS: The design of the new e-STUDIO colour series is an immediate hit!



INDIVIDUAL AND FLEXIBLE: Users can set up the system's user interface (home screen) any way they like.



It goes without saying that the printer and MFP manufacturer's solutions require the right hardware at the cutting edge of technology to go with the latest software developments. With this in mind, Toshiba Tec is presenting three new series of colour and black-and-white MFPs - e-STUDIO2500AC, e-STUDIO5005AC, and e-STUDIO5008A - in different speed classes and with new and improved features and functions. FACTS has taken a closer look at the MFP e-STUDIO2505AC, part of the e-STUDIO5005AC series, which includes

five systems that offer printing and copy speeds of between 25 and 50 A4 pages per minute.

The first thing that stands out is the design of the MFP series: the black multifunctional system, with glossy dark grey applications and a slightly ribbed surface structure, was an immediate hit with the editorial staff. But there's more - Toshiba Tec has also pulled out all the stops when it comes to the features. For instance, the standard version utilises the new e-BRIDGE Next technology, allowing an effective integration of communication and workflow. This offers

the possibility to implement additional embedded apps, while integrating a powerful processor. The standard version also boasts a 320 gigabyte secure hard disk, network and duplex functionalities, and a tablet-like user interface.

This new user interface is a nine-inch touchscreen that got full marks from the test jury for its extreme ease of use — the best part is that the user interface can be individually set up. This means that after identifying themselves, each employee can work with a home screen that shows them the functionalities they find most important.

## HIGH PRINT QUALITY

Toshiba Tec is also proud of the optional automatic 300-sheet dual-scan document feeder, which has a capacity of 240 pages per minute at a resolution of 300 dpi. In terms of productivity, the new Toshiba systems are nothing less than impressive. The FACTS test carefully tested the manufacturer's performance data, and all the indicated speeds were accurate. In particular, the e-STUDIO2505AC system carried out the duplex print and copy jobs brilliantly, showing almost no deviation at all from the basic speed. And the new e-STUDIO system also passed the print and copy quality test with flying colours: with its real print resolution of 1,200 x 1,200 dpi, all the test documents were printed and copied without any problems.

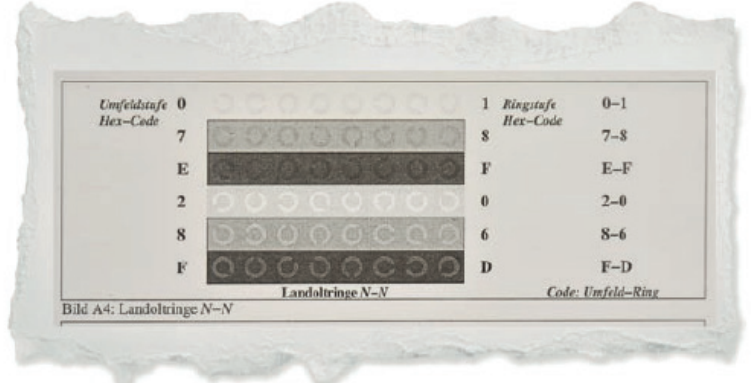
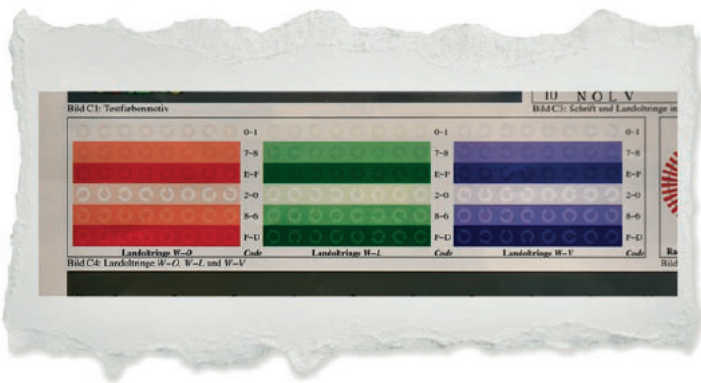
Many MFPs in this performance class have problems copying Landolt Cs, but this system showed particularly good results (see photo). Black-and-white and colour prints were equally impressive.

It was only when printing a one-point font that a few tries were necessary. But the right settings were quickly found, because the printer driver has a great many pre-set automatic and individual options for printing various templates. The results were remarkable: even when examined closely, all the symbols on the challenging FACTS template were reproduced entirely legibly.

The new series from Toshiba Tec can be easily configured to suit every imaginable workplace. For instance, the paper supply can be adjusted from 1,200 sheets up to as many as 3,200 sheets. Various paper

finishing processes, different document feeders, and a fax card are all available as options. The e-STUDIO5005AC series was also developed for office environments that require mobile printing. All models can receive print jobs sent from mobile devices over AirPrint, Google Cloud Print, or the Mopria Print Service. The new e-BRIDGE Next series is also at the cutting edge of environmental friendliness, because the systems fulfil the criteria of various environmental certifications and standards like ENERGY STAR and Blue Angel.

translated to English by TGIS Marketing Division ■



## PRECISE PRINTING:

The new Toshiba colour system was able to copy the FACTS jury's Landolt Cs without any problem.

## CONCLUSION

*The FACTS test proves that the new generation of MFPs from Toshiba Tec offers high flexibility, because the various models in the series, the embedded apps, the possibility for external applications, and not least the various paper finishing options mean that the system can be perfectly integrated into the user's workflow. The system's new operation concept makes it easy and quick to master. All the FACTS productivity and quality tests were passed with high marks. And the new and modern design of the e-STUDIO5005AC series is highly appealing.*

Product: e-STUDIO5005AC series

Description: Colour multifunctional system

Provider: Toshiba Tec

Contact: [www.toshibatec.eu](http://www.toshibatec.eu)

## ASSESSMENT

Print productivity:	*****
Copying productivity:	*****
Quality:	*****
Handling/control:	*****
Overall result:	very good